



## **Notice to Competitors #4**

### **Fleet Course Racing**

### **Bravo Course Fixed Mark Configuration**

This information is provided in accordance with section 2.1 and 3.1 of the Sailing Instructions.

Section 7, Section 11.3, Section 12 and Attachment B (see attached) are modified to incorporate an all fixed mark alternative course configuration for Bravo Course.

#### **7. RACING AREAS**

- 7.1. Alpha Course is a circle of 8 fixed marks with a diameter of 1 nm centred on fixed mark #9 approximately 1.4 nm on a compass bearing of approximately 210 degrees (right) from the Whitby Harbour East Pier Head light (See Attachment A). The start line incorporates fixed mark #9.
- 7.2. Bravo Course is in the same area as the Alpha Course but incorporates both fixed and set marks in a Windward/Leeward course configuration. The leeward mark will be one of the 9 fixed marks on the Alpha Course and will be determined by the Race Committee no later than 15 minutes before the first warning. Depending on course configuration (See Attachment B), the windward mark will either be set between 0.4 and 1.5 nm to windward or be a fixed mark on the perimeter of the circle. The start line is below the leeward mark.

#### **11. THE START**

- 11.3. The course configuration, direction and length will be displayed on the signal boat as defined in Attachments A and B.

#### **12. CHANGE OF THE NEXT LEG OF THE COURSE**

- 12.1. See Attachments A and B.

These changes are made to give the race committee an option to use all fixed marks on Bravo Course when mark laying resources are not available. It also introduces course configuration designations and signals, and control over the number of loops to be raced.

David MacKinnon  
Principal Race Officer  
2018/08/12

# WYC 2018 Sailing Instructions - Course Racing

---

---

## Attachment B – BRAVO COURSE

### B1. RACING AREA

- B1.1. The race area is a circle with a diameter of 3 nm centered on fixed mark #9, which is approximately 1.4 nm on a compass bearing of 210 degrees (right) from the Whitby Harbour East Pier Head light.
- B1.2. The leeward mark (Mark 2) shall be any one the nine fixed marks on Alpha Course.

### B2. COURSES

- B2.1. The course will be a windward-leeward configuration as shown below. Course SA will be 2 loops and Course FA will be 1 to 3 loops.
- B2.2. The race committee will display the course configuration using placards on a staff, and the course bearing and length using display boards.
- B2.3. The length of the windward leg and the number of loops will be set such that the majority of the class will finish in 35 minutes. Two races will be run each night.

### B3. MARKS

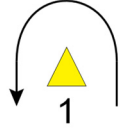
- B3.1. The Start / Finish mark shall be a pin approximately 6 feet in height having an orange flag.
- B3.2. For Course SA, Mark 1 shall be a yellow tetrahedron. The change mark shall be an orange tetrahedron.
- B3.3. For Course FA, Mark 1 shall be any one the eight perimeter fixed marks on Alpha Course. The change mark will be any one the remaining perimeter fixed marks.
- B3.4. For Course SA, Mark 2 shall be any one the nine fixed marks on Alpha Course.
- B3.5. For Course FA, Mark 2 shall be the fixed mark #9 on Alpha Course.

### B4. CHANGE OF THE NEXT LEG OF THE COURSE

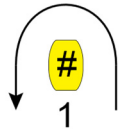
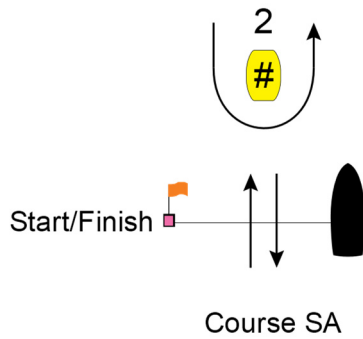
- B4.1. For Course SA, the race committee will lay a new mark and signal the relative direction change and/or relative length change in accordance with RRS 33. The race committee will remove the original mark as soon as practicable. When, in a subsequent change of course, a new mark is replaced, it will be replaced with an original mark.
- B4.2. For Course FA, the race committee will determine the new fixed mark and signal the new compass bearing in accordance with RRS 33. The original mark will not be removed.

# WYC 2018 Sailing Instructions - Course Racing

## BRAVO COURSE DIAGRAMS



Course SA – Windward/Leeward, Mark 1 Set	
<i>Signal</i>	<i>Mark Rounding Order</i>
SA2	Start - 1 - 2 - 1 - Finish



Course FA – Windward/Leeward, Mark 1 Fixed	
<i>Signal</i>	<i>Mark Rounding Order</i>
SA1	Start - 1 - Finish
SA2	Start - 1 - 2 - 1 - Finish
SA3	Start - 1 - 2 - 1 - 2 - 1 - Finish

