



SAILING INSTRUCTIONS

WHITBY 50, WHITBY YACHT CLUB

FRIDAY-SATURDAY JUNE 22-23, 2018

WHITBY YACHT CLUB IS THE RACE ORGANIZING AUTHORITY

1 RULES

- 1.1 The race will be governed by the rules as defined in *The Racing Rules of Sailing 2017-2020 Racing Rules of Sailing (RRS)*.
- 1.2 The prescriptions of the CYA, applicable Class Rules and the Sailing Instructions. The requirements of rule 75.2 shall not be grounds for protest. This changes Rule 60.1a.
- 1.3 The *International Regulations for Preventing Collisions at Sea, 1972* will replace Part 2 of the "RRS" between 20:00hrs and 06:00hrs for the duration of the race.
- 1.4 Individuals and boats are strongly recommended to comply with the World Sailing Offshore Special Regulations "Category 3". Skippers not meeting these regulations are strongly encouraged to file a sail plan with the coast guard and provide regular VHF updates on channel 16.
- 1.5 Stanchions, lifelines and pulpits and/or a longitudinal system of jackstays fitted in such a way that a crew member can clip on and move the full length of the yacht are required. Such a system should have a breaking strain of at least 2000 kg (4400 lbs).
- 1.6 Outside Help is modified to allow all forms of communication. Each yacht may communicate with any person, competitor, yacht or outside source of information available using any means available throughout the race. This changes Rule 41.
- 1.7 If there is a conflict between these Sailing Instructions and the Notice of Race the Sailing Instructions will prevail.

2 NOTICES TO COMPETITORS

Notices to competitors will be posted at www.wycfleet.com and on the notice board in the Whitby Yacht Club clubhouse.

3 CHANGES TO SAILING INSTRUCTIONS

- 3.1 Changes to the sailing instructions will be posted by 1600 on Friday June 22 on the Official Notice Board and on the WYC website at <http://www.wycfleet.com>.
- 3.2 It is the responsibility of each competitor to check the Official Notice Board or the ABYC website for changes to the sailing instructions before racing.

4 SIGNALS MADE ASHORE

4.1 Signals made ashore will be displayed on the flag pole located on the lawn west of the clubhouse.

4.2 When flag AP is displayed ashore, '1 minute' is replaced with 'not less than 45 minutes'.

5 SCHEDULE OF RACES

The race will take place on 22 June 2018 with the first Warning Signal is scheduled for 20:00hrs.

6 CLASSES AND ELIGIBILITY

6.1 PHRF Spinnaker (FS), PHRF JAM (Jib and Main or NFS) and class divisions.

6.2 Participating boats will be split into Spinnaker and JAM divisions. If there are 5 or more boats in a class then they can request their own start. The division splits will be presented at the Skipper's Meeting and they will be posted on the Racing Notice board.

7 RACING AREAS

Attachment A shows the location of the racing area.

8 THE COURSE

8.1 The diagram at Attachment A shows the course.

8.2 The Start will be between WYC Mark 9 (N 43° 49.708' W 78° 56.260') and the Signal Boat.

8.3 Head West to Toronto Harbour Outer Approach Light Spar Buoy T2 (N 43° 36.661' W 79° 20.78'). Location listed at Attachment A. Location listed only as a reference of current information available at the creation of these SIs. All participants are advised to confirm all course mark locations.

8.4 Head East back to Whitby. Finish at WYC Mark 9.

8.5 Courses will not be shortened. This changes RRS 32.

8.6 All rounding marks will be left to port.

8.7 The rounding marks are not managed by WYC. Absence of a rounding mark will not be grounds for redress. This changes rule 62.1 (a).

8.8 If a rounding mark is absent, boats shall round the location of the mark given in these Sailing Instructions and be prepared to submit evidence that they have done so if required.

9 MARKS

9.1 The Start Mark is a tethered polyethylene barrel painted yellow with a blue number 9 painted in three places. The mark will be illuminated at the start.

9.2 The Turn Mark will be the Toronto Harbour Outer Approach Light Spar Buoy, a red spar marked T2.

10 THE START

10.1 Races will be started by using RRS 26 with the warning signal made five minutes before the starting signal.

10.2 The starting line will be between WYC Mark 9 to port and the staff or halyard carrying an orange flag on the race committee vessel to starboard.

10.3 There will be an interval of at least one minute between the start of one class and the warning signal for the next class.

10.4 Boats whose warning signal has not been made shall keep clear of the starting area during the starting sequence for other classes.

10.5 Divisions may be started together at the discretion of the race committee. If it intends to start more than one division together, the race committee will announce its intentions by radio no later than five minutes before the earliest warning signal for the divisions involved.

10.6 The race committee may announce the sail numbers or boat names of premature starters by VHF. Failure to make an announcement, the timing of the announcement, or the order in which boats are announced shall not be grounds for redress. This changes rule 62.1 (a).

10.7 No boat shall hoist its spinnaker until the boat has started and cleared the starting line.

11 THE FINISH

11.1 The finishing line will be between WYC Mark 9 to port and the halyard or staff displaying a blue flag on the race committee vessel to starboard.

11.2 If there is no race committee vessel on station at the finish, boats shall finish within two boat lengths of WYC mark 9 to port take their own time and report their finish time to the race committee by text message at (905) 924-2483 email to fleet@wyc.ca within 90 minutes of finishing. GPS time shall be used. Messages or email shall include name, sail number and time of finish.

12 PENALTY SYSTEM

The One-Turn and Two-Turns penalties as specified in RRS 44 will apply.

13 TIME LIMIT

The time limit will be 1900hrs. June 23, 2018. Any boat that has not finished by the time limit will be scored DNF, without a hearing. This changes rule A5.

14 PROTESTS

14.1 Protest forms will be available at WYC near the Official Notice Board. Protests and requests for redress or reopening shall be put in the mail slot on the WYC Office door and a confirming telephone call shall be made to (905) 924-2483, or email fleet@wyc.ca within the appropriate time limit.

14.2 The protest time limit will be 90 minutes after the protesting boat finishes.

14.3 Protests will be scheduled and parties will be notified. Postings of Protest hearing on the WYC Official Notice Board will constitute the notice provided for in Rule 63.2.

15 SCORING

Scores as outlined in A4.1 (low point scoring system) will apply (see RRS Rule A4.1).

16 RADIO COMMUNICATION

The Race Committee will use VHF Channel 71 for this event.

17 SAFETY

17.1 All boats shall comply with the applicable equipment Regulations of the Government Agencies in their country of registration. Crew is the sole responsibility of the owner(s) and/or skipper who must ensure that the boat is sound, thoroughly seaworthy, manned by experienced crew and adequately insured. He/she must be satisfied as to the soundness of the hull, spars, rigging, sails and gear. He/she must ensure that all safety equipment is properly maintained and stowed and that the crew is familiar with its location and use.

17.2 It is the sole responsibility of the skipper of each boat to decide whether or not to start, continue in or retire from a race. By starting any particular race the skipper accepts to abide by the sailing instructions.

17.4 A boat that retires from the race shall inform the race committee as soon as practicable by VHF channel 71. If a boat cannot reach the race committee by VHF, she shall report by telephone (905) 924-2483 or email fleet@wyc.ca

17.3 Boats that have not finished by 17:00hrs are asked to report their status to the race committee by VHF. If a boat cannot reach the race committee by VHF, she is asked to report by telephone to (905) 924-2483.

17.4 Emergencies calls for assistance shall be to the Coast Guard at VHF channel 16, or to police via telephone 911.

EVENT SPONSORS:



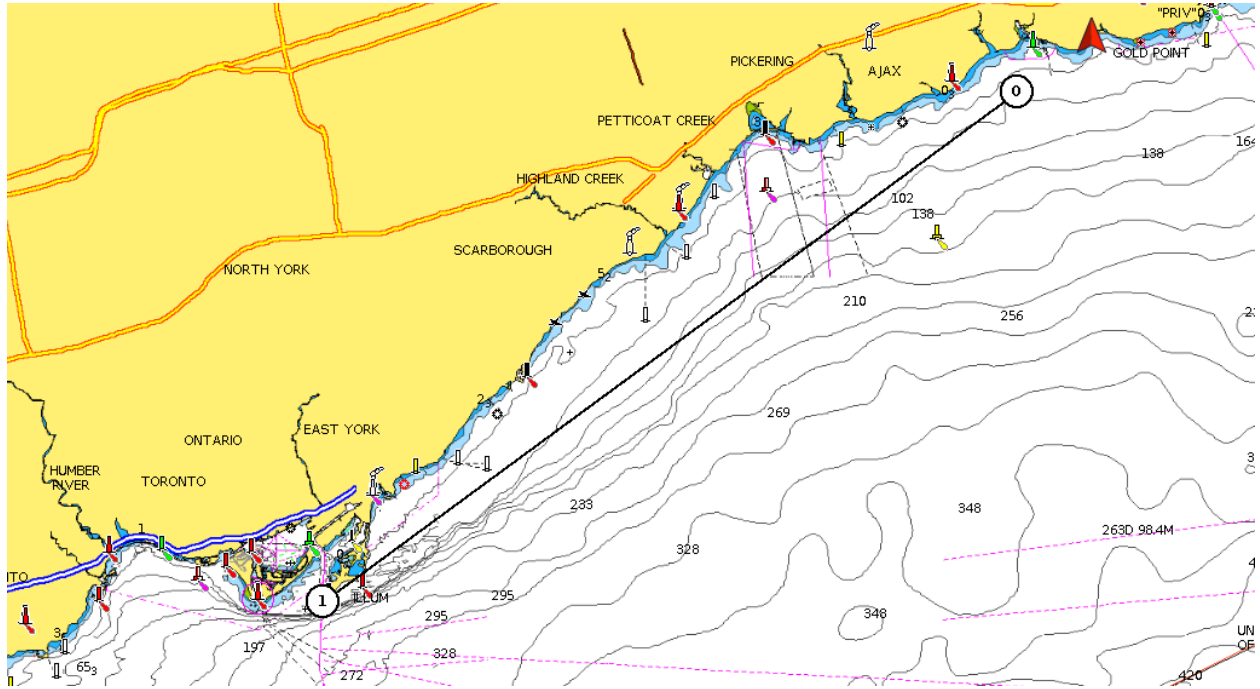
INSURANCE BROKER (MARINE)
@PETLEYHARE.COM
@portwhitbymarinesupplies.com



Maribay Designs
Childcare Supplies Manufacturer
@maribaydesigns.com



ATTACHMENT A: RACE AREA AND COURSE DIAGRAM



Mark	Location	Description
Start	N 43° 49.708' W 78° 56.260'	Tethered polyethylene barrel painted yellow with a blue number 9 painted in three places.
Turn	N 43° 36.661' W 79° 20.78'	Red spar marked T2